

ANGLE BALL VALVES

FEMALE-MALE WITH HALF-UNION

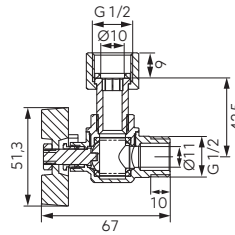
- CW617N-4MS brass
- reduced lead and nickel content
- easy installation/removal of installation equipment - movable nut allows access to flat sealed connection area

FERRO®

KFM•SGK

Angle ball valve with butterfly and half-union, female-male

- female-male with half-union
- with gland
- handle: metal butterfly type
- body and ball material: brass
- material of ball and stem seals: PTFE
- material of flat seals: EPDM
- nominal pressure: 10 bar
- maximum working temperature: 100°C



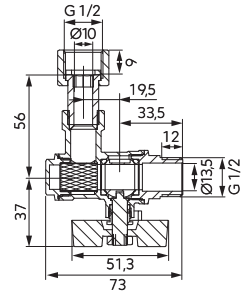
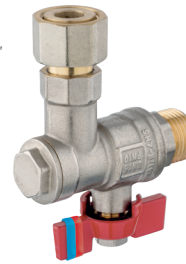
KFM1SGK

connection dimension: 1/2"

KFMF•SGK

Angle ball valve with butterfly placed under the body and half-union, female-male

- female-male with half-union
- with gland
- handle: metal butterfly type placed under the body
- body and ball material: brass
- material of ball and stem seals: PTFE
- material of flat seals: EPDM
- material of filter: stainless steel
- nominal pressure: 10 bar
- maximum working temperature: 100°C

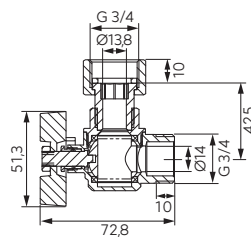
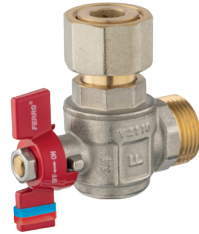


KFMF1SGK

connection dimension: 1/2"

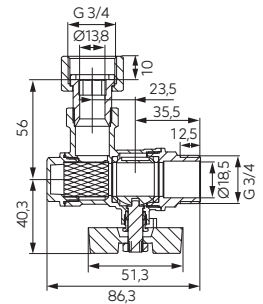
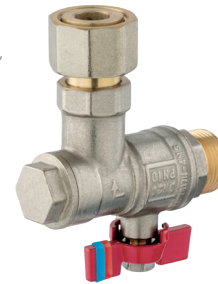
KFM2SGK

connection dimension: 3/4"



KFMF2SGK

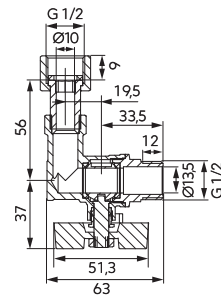
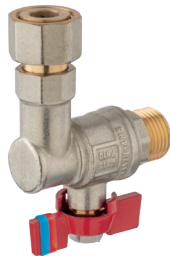
connection dimension: 3/4"



KFM•SGPK

Angle ball valve with butterfly placed under the body and half-union, female-male

- female-male with half-union
- with gland
- handle: metal butterfly type placed under the body
- body and ball material: brass
- material of ball and stem seals: PTFE
- material of flat seals: EPDM
- nominal pressure: 10 bar
- maximum working temperature: 100°C



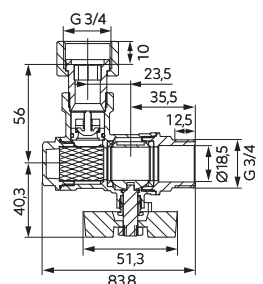
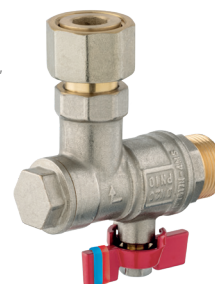
KFM1SGPK

connection dimension: 1/2"

KFMFZZ2SGK

Angle ball valve with butterfly placed under the body and with filter, check valve and half-union, female-male

- female-male with half-union
- with gland
- check valve
- handle: metal butterfly type placed under the body
- body and ball material: brass
- material of ball and stem seals: PTFE
- material of flat seals: EPDM
- material of filter: stainless steel
- nominal pressure: 10 bar
- maximum working temperature: 100°C



KFMFZZ2SGK

connection dimension: 3/4"

KFM2SGPK

connection dimension: 3/4"

