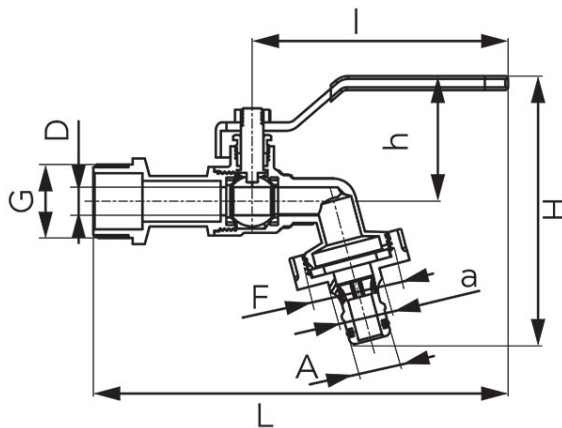
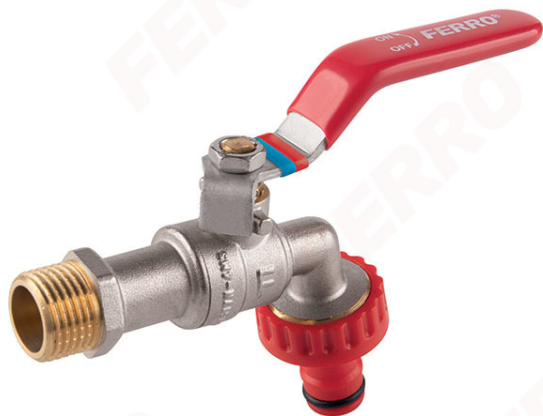


Code: **KCPN**

F-Comfort - intake water ball valve with plastic quick coupler hose connection

<https://www.ferrocompany.com/product-6139-KCPN.html>



- warranty: 5 years
- media valves: water
- male
- with gland
- with quick coupler hose connection tip
- handle: metal lever
- body and ball material: brass
- material of ball and stem seals: PTFE
- nominal pressure: 10 bar (PN10)
- maximum working temperature: 65°C
- CW617N-4MS brass - the latest hygienic standard
- NICKEL FREE - all product elements which may have contact with potable water are not covered with nickel

Index	DN	G	D [mm]	L [mm]	I [mm]	H [mm]	h [mm]	A [mm]	a [mm]	F	Kvs [m³/h]	Individ. pack.	Bulk pack.
KCPN1	15	G1/2	10	144	90	94	43	15,5	19,8	G3/4	2,50	15	60
KCPN2	20	G3/4	10	148	90	97	43	15,5	19,8	G1	2,50	10	60